

Higher Brightness Images, Reliable Operation, Flexible Usage For Professional Use

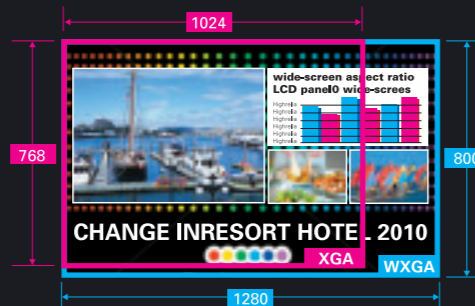


Features a highly reliable new optical engine with inorganic panels, this projector has a brightness of 5500 lumens (WM4500/L: 4500 lumens) and a high contrast of 800:1*, putting it at the top of its class in performance. Naturally suited to use in venues such as large meeting rooms, conference rooms and lecture halls, the projector is also ideal for projecting digital signage in bright places.

*When in "Auto" lamp mode

16:10 wide-screen aspect ratio LCD panels

The adoption of a high-resolution Wide XGA panel enables projection of 16:10 aspect ratio Wide XGA (1280 x 800 dot) images. Compared to the 4:3 aspect ratio XGA (1024 x 768 dot) format, the size of the screen has been greatly expanded, enabling the display of even more information.



Easy Installation

Lens center layout (symmetry)

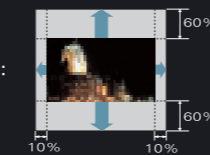
A symmetrical design with the lens in the center of the projector has been adopted to suit ceiling installation in particular. This allows the projector and the screen to be centered together, which not only makes design and installation much easier, but also offers a sense of greater stability through symmetry of the positioning between projector and screen.



Powered lens shift & Powered zoom and focus

All models are equipped with a Powered Vertical/Horizontal Lens Shift function and an Electrical Zoom/Focus function that lets you adjust the projection position without having to move the projector. The powered function makes it easy to achieve fine positioning adjustments, using the remote control, even for projectors installed in high places.

Powered lens shift (Vertical, Horizontal)
Featuring both vertical and horizontal lens shift (vertical: +/- 60%, horizontal: +/- 10% (maximum)), the PLC-XMseries enables intuitive operation for easy on-site setup.



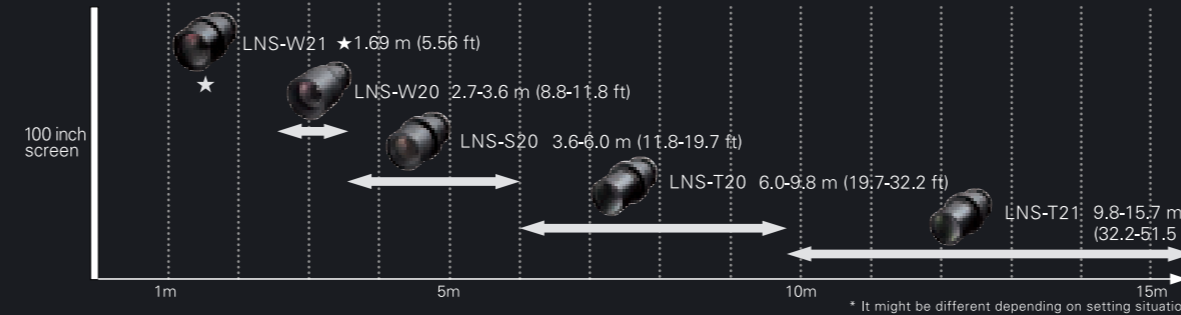
Powered zoom and focus

Zoom and focus can be carried out electronically, so that adjustments can be made easily (smoothly). Of course operations can also be carried out using the remote control, so that adjustments can be carried out easily from a distance even after the projector has been installed in a high location.



A wide range of optional lenses

5 different optional lenses for various uses
Projection distance of standard lens (to 100 inch screen)



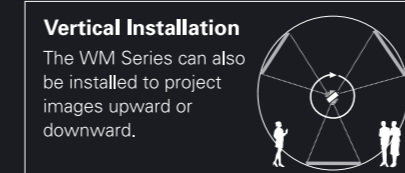
Interchangeable Lenses (Optional)

To enable projection in various locations, the lens lineup extends from short to long focus lenses. No additional tools are necessary for changing lenses. Simply press the button and screw in the interchangeable lens.



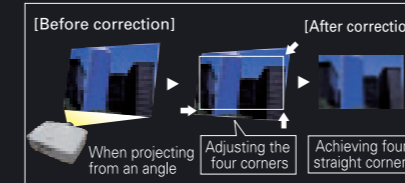
Tilted Installation Possible (360° Tilt Angle)

The projector can be installed at a 360° tilt angle in the vertical direction. This makes it possible to project images facing directly above or below the projector.



Corner Keystone Function (WM5500/L)

The Corner Keystone function corrects trapezoidal distortion. To square the image, simply designate the four corners with the remote control or projector buttons. The corrected data is stored in memory, so rectangular screens can be displayed with permanently installed projectors at lecture hall and conference room.



Easy Maintenance

Easier Replacement

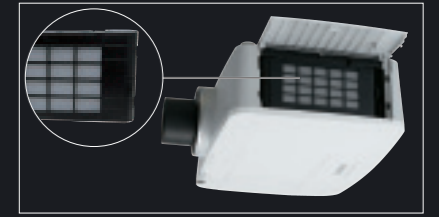
Lamp replacement has been simplified to make maintenance easier. Easy removal and replacement of the lamp from the top. Of course the lamp can also be replaced easily even if the projector is ceiling mounted.



Active Maintenance Filter (AMF) System*1 (WM5500/L)

The "AMF: Active Maintenance Filter" system enables a filter cartridge replacement interval of approximately 10,000 hours*2. One cartridge containing a filter roll equal to 10 filters reduces the filter cartridge replacement frequency to one-tenth. Consequently, high reliability is provided with lower maintenance costs, while saving resources.

*1 An automatic filter replacement system. WM4500/L adopts fixed filter (Approximately 3,000 hours)
*2 General estimate when Lamp control "Normal mode" is selected, which was calculated through the company's independent test in reference to the JIS D0207 test method. The filter cartridge replacement frequency changes according to the use environment.



Useful Feature

Picture in Picture, Picture by Picture

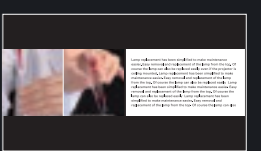
"Picture in Picture" and "Picture by Picture" function

Two images can be projected simultaneously on a split screen, useful for situations such as TV conference.

P in P (Picture in Picture)
Image size and position are adjustable
Example <Product introduction>
At TV conference between A and B
Main screen: Presentation content
Sub screen: Party at the other side of the line
It is possible to share the information while seeing each other's face.



P by P (Picture by Picture)
Image size and position are fixed
Example <Use in class>
At science experiment
Left screen: DVD movie
Right screen: Teaching material
It is possible to project both video and materials.



Mechanical Shutter System (WM5500/L)

The Mechanical Shutter system is popular for a variety of professional uses. It allows this star-studded selection of SANYO Portable projectors to meet a host of demanding business needs, including meetings, entertainment and promotional applications.

Auto Input Signal Search

When using a conventional projector, you have to physically select the input signal. Auto Input Signal Search automatically determines the input signal when the projector is installed and the power is turned on, and sets the input for you.

7-Watt Speakers

High-output 7-watt speakers built into the projector produce powerful sound in spaces such as conference rooms and classrooms.

Antitheft Hook

The antitheft hook lets you attach a chain to the projector for strong protection against theft.

HDMI Terminal

The WM Series comes equipped with an HDMI (High Definition Multimedia Interface) terminal. It is possible to project beautiful images.

Screen aspect function

When the screen aspect is set according to the aspect ratio of used screen, the image that does not protrude from the screen can be projected.

WXGA
Multimedia Projector

PLC-WM5500/PLC-WM5500L
Brightness of 5,500 lumens

PLC-WM4500/PLC-WM4500L
Brightness of 4,500 lumens

